

COVID-19 Screening Decision Tree

Student or staff member complains of COVID-19 or MIS-C symptoms.

Call 9-1-1 (EMS) if any the following symptoms are exhibited

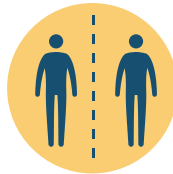
- +Difficulty or Rapid Breathing
- +Chest Pain
- +Pulse O₂ <92%
- +New Confusion
- +Bluish Lips/Face
- +Unable to wake or stay awake

NO



Mask student or staff member

Place student in isolation area away from others



Staff should go home immediately and consult a healthcare provider.

Questions to ask:

1. When did symptoms appear?
2. Recent COVID-19 exposure?
3. Signs and Symptoms (*see list on back*)
4. Temp > 100.4 or school board policy if lower
5. +Pulse O₂ <92%

Verbal, Visual, & Physical concerns out of range?

NO

Allow to rest for 10 minutes

Improving? NO

YES

Back to Class

YES

- +Isolate
- +Send home ASAP
- +Contact Medical Provider
- +Contact Public Health

FOLLOW-UP WITH

- +Student/family
- +Health Services
- +Administrator

Symptoms of COVID-19

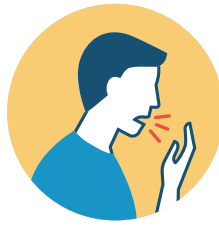


FEVER 100.4* OR CHILLS

**or school board policy if threshold is lower*



SORE THROAT



COUGH*

**especially new onset, uncontrolled cough*



DIARRHEA, VOMITING OR ABDOMINAL PAIN



HEADACHE*

**particularly new onset of severe headache, especially with fever*



NEW LOSS OF TASTE OR SMELL



MUSCLE OR BODY ACHES OR FATIGUE



CONGESTION OR RUNNY NOSE



SHORTNESS OF BREATH OR DIFFICULTY BREATHING

**Usually presents with more than one symptom.*

Look for emergency warning signs* for COVID-19. If someone is showing any of these signs, seek emergency medical care immediately

***Difficulty or rapid breathing**

***Persistent pain or pressure in the chest**

***New confusion**

***Inability to wake or stay awake**

***Bluish lips or face**

***Stomach Pain**

**This list is not all possible symptoms. Please call your medical provider for any other symptoms that are severe or concerning to you.*

**Call 911 or call ahead to your local emergency facility:
Notify the operator that you are seeking care for someone who has
or may have COVID-19.**

Symptoms of MIS-C

***Rash**

***Red Eyes**

***Cracked/Swollen Lips**

***Red/Swollen Tongue**

***Swelling Hands/Feet**

***Stomach Pain**